

ADA Compliance Manuals Collection



The Source
for Critical Information and Insight™

State-Specific ADA (Accessibility) Compliance Solution

The ADA Compliance Manuals Collection to comply with individual state laws and regulations.

The ADA Compliance Manual Collection offered from IHS delivers exclusive time-tested manuals from Jordan Publishing, utilized in the construction marketplace for over twelve years. Jordan is the premier publisher of Americans with Disabilities Act (ADA) state-specific accessibility compliance manuals, simplified to help users find relevant information quickly.

These proven manuals provide architects, interior designers, property owners, contractors, and others with a clear and concise reference source of the exact requirements to assist with state-specific accessibility compliance.

Benefit of these unique time-saving manuals include:

- Aggregation of state and federal level information
- Simplification and interpretation of state and federal requirements
- Comprehensive indexing that includes keywords used frequently by the industry
- Detailed categorization
- Enhanced navigation through improved cross-referencing of code and diagram references to specific chapter or page
- Additional and enhanced drawing details
- Clearly laid out and easy to follow – double spaced between lines
- Bookmarked and fully text searchable

Collection Content

The ADA Compliance subscription collection includes 21 (20 state-specific and New York City) ADA Compliance Manuals:

Arizona	New York City
California	New York State
Florida	Ohio
Georgia	Oregon
Illinois	Pennsylvania
Indiana	South Carolina
Maryland	Texas
Massachusetts	Virginia
Michigan	Washington
Minnesota	Wisconsin
New Jersey	

Each manual is also available individually from IHS in CD-ROM and book formats. Or you can subscribe to the complete set of ADA Compliance Manuals through the IHS Specs & Standards online service.

Order Options

State-Specific ADA Compliance Manuals Collection Manuals can also be added individually in a Custom Collection - Order Code: JRDN Various

Chapter 31: Ramps (continued)

Width

1109.7.4 The minimum clear width of a ramp shall not be less than 36 inches (914mm). *Diagram 56 - p. 252*

Landings

2015.3.4.4 Ramps having slopes steeper than 1:12 (vertical in 20 units horizontal (5% slope) shall have landings at the top and bottom and at least one intermediate landing shall be provided for each 5 feet (1524mm) of vertical rise measured between the horizontal planes of adjacent landings. *See Diagrams 57, 58 and 59 - pp. 253-255.*

1109.7.5 Ramps within the accessible route shall have landings at the top and bottom, and at least one intermediate landing for each 30 inches (762mm) of rise. Landings shall be level and have a minimum dimension measured in the direction of ramp run of not less than 60 inches (1524mm). *Diagrams 57, 58 and 59 - pp. 253-255.*

Where the ramp changes direction at a landing, the landing shall not be less than 60 inches by 60 inches (1524mm by 1524mm). *Diagram 58 and 59 - pp. 254 & 255*

The width of any landing shall not be less the width of the ramp.

Handrails

1109.7.6 Ramps having slopes steeper than 1:12 (vertical 20 units horizontal (5% slope) shall have handrails on both sides. Handrails shall be continuous, except they shall not be required at any point of access along the ramp. Handrails shall extend at least 12 inches (305mm) beyond the top and bottom of any ramp segment. *Diagram 56 - p. 252*

See Chapter 46: Handrails - Grab Bars - Tub Seats - Shower Seats - 1109.10.11 - pp. 144 & 145 and Diagram 56 - p. 252.

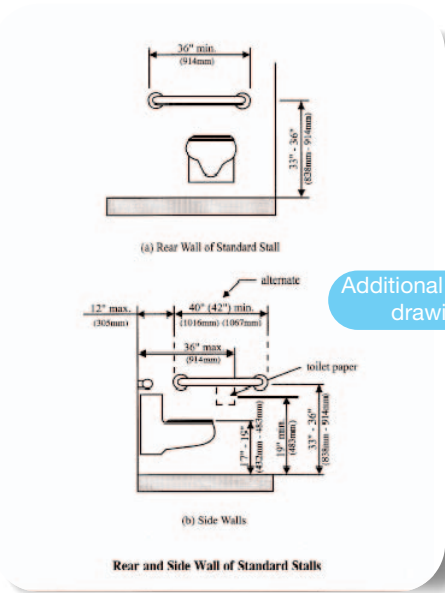
EXCEPTION:

Ramps having a rise less than or equal to 6 inches (152mm) or a run less than or equal to 72 inches (1829mm) need not have handrails.

- 115 -

Extensive pinpoint cross-references

Easy to read format



Additional and enhanced drawing details

Related Solutions:

In addition to the ADA Compliance package, IHS also offers these collections for the Architectural and Construction Professional:

- Model Building Codes Collection – including model building codes from ICC, ICBO, BOCA, SBCCI, NFPA, and 2002 NY State Codes
- AEC Referenced Standards Collection – the ICC referenced standards from ACI, ASME, ASSE, ASTM, AWWA, CSA, NFPA, UL and more.

- Plan Analyst code compliance software – complete code studies and building plan checks quickly and efficiently, allowing users to evaluate projects and explore how code requirements change with minor modifications to the project description

The IHS Specs & Standards online Experience

- Desktop access 24x7
- Professional document management
- Single source for your codes and standards needs
- Unlimited helpline support



For more information on IHS Inc.:
 Worldwide +1 303 397 2896
 U.S. 800 716 3447
 Web: www.ihs.com
 EMAIL: construction@ihs.com